

Location: Nicola Valley, Near Spences Bridge

River: Nicloa

Cell reception

Section: Shackan Campground to
Railway Trestle to

Max and Min Flow Range:

25-100 cms

Best in Spring runoff

April through June

Distance: 14.8 km

Average time to run: 2 to 3 hrs

Overall Grade: 2

Class of Crux rapids: 2+

Red Rock Canyon

11 km from the put in

Put in: Shackan Campground, highway #8

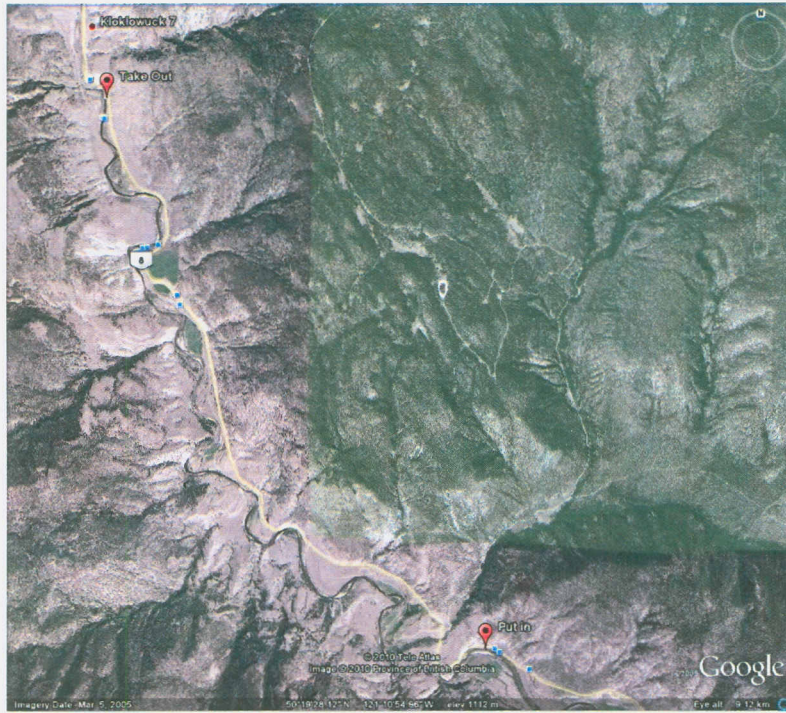
Take out: Rattlesnake Bridge, #8

Alternate Take out: N/A

Access/ Egress: The river runs along Highway 8, so you can access the river at any point along the way.

River Map (*Google map or BCI Map inserted here*)

Nicola River Overview



Nicola River Put In



Nicola River TO



Emergency facilities (*Google map or BCI map inserted here*)

Name	Phone Numbers
Lytton Ambulance Service	531 Main Street
35 km from Spences Bridge	1-250- 455-2221

Lytton St Bartholamew's Hospital 250-256-4233
Corner of 5th and Main street, Lytton B.C.



Local Operator

Name	Numbers	Locations
Kumsheen River Rafting	1-800-663-6667	5 km From Lytton

Standard River Hazards: Rattlesnakes on the shore

Crux rapids (*With Photos*)

Red Rock Canyon. 2+